



FREQUENTLY ASKED QUESTIONS

QUESTION - I'M INTERESTED IN THE SCHOOL BUT NOT READY TO APPLY. WHAT CAN I DO?

Answer - You can complete an inquiry and we will get back to you with more information.

- Visit the school website: www.shinercatholicschool.org
 - admissions tab
 - request more information

QUESTION - HOW DO I APPLY?

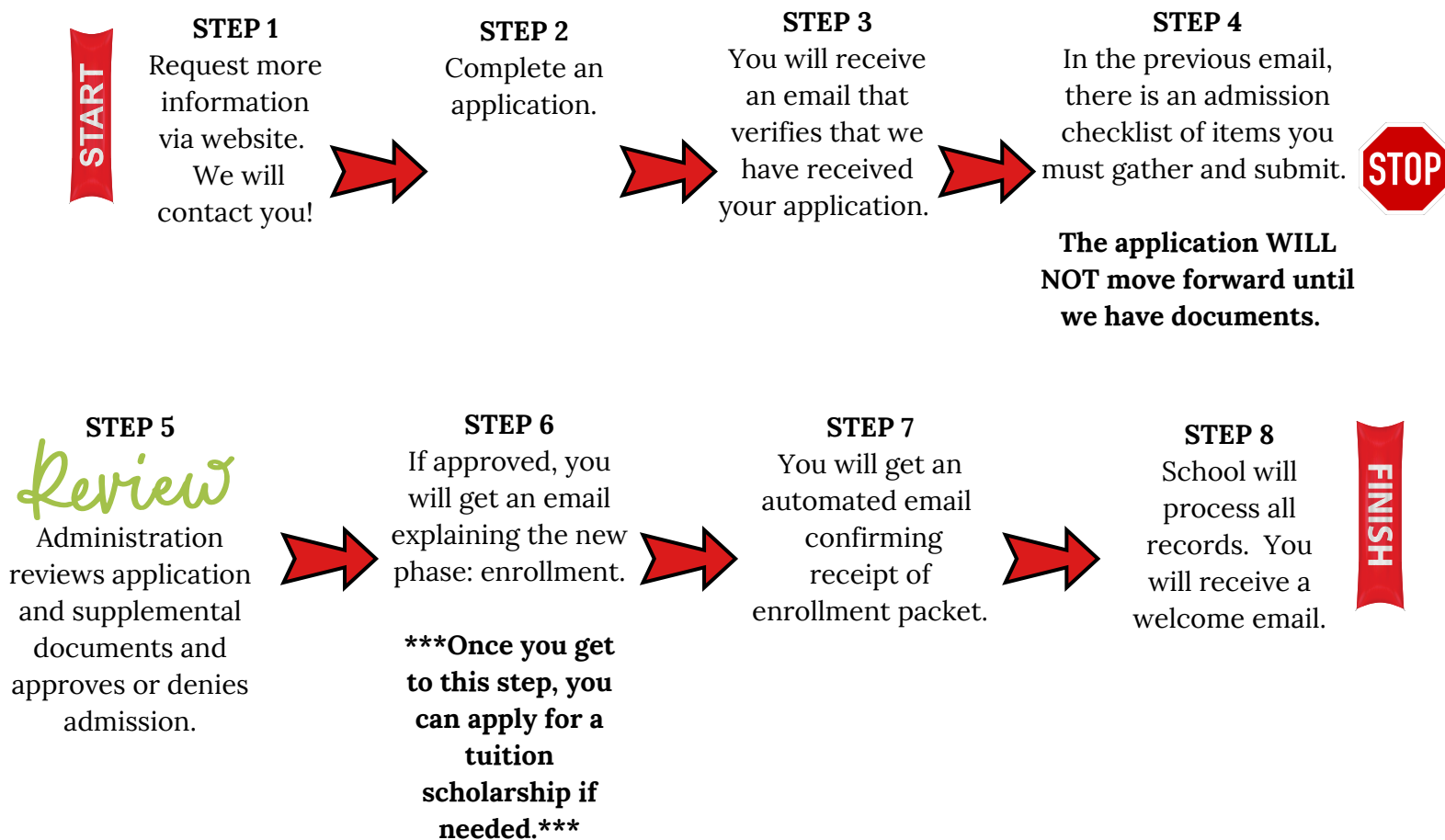
Answer - The entire application process is done online.

- Visit the school website: www.shinercatholicschool.org
 - admissions tab
 - new student application

QUESTION - HOW DOES THE ADMISSIONS PROCESS WORK?

Answer - The admissions process has two parts: 1. application and 2. enrollment.

EVERYTHING CAN BE FOUND ON THE WEBSITE UNDER ADMISSIONS!



QUESTION - HOW MUCH IS TUITION?

Answer - The tuition schedule is variable based on your family dynamics.

- Visit the school website: www.shinercatholicsschool.org
 - admissions tab
 - 2023 - 2024 Tuition and Educational Fees

Parents also have the option to go with a subsidized rate, which means a lower monthly payment OR they can pay the full price which means they opt-out of fundraising. ALL PARENTS STILL PAY THE SAME AMOUNT.

Parents pay through FACTS and that is set up during the enrollment process.

QUESTION - ARE THERE SCHOLARSHIPS TO HELP WITH TUITION?

Answer - Yes! Students in Kindergarten through 12th grade can apply. There are no PreK scholarships.

The deadline to apply is June 1st.

- Visit the school website: www.shinercatholicsschool.org
 - admissions tab
 - FACTS Payment Plan / Tuition Assistance

There are a limited number of tuition scholarships, and parents must apply through FACTS. The FACTS program is used to collect family data, analyze it, and help identify families who qualify for the tuition scholarship.

*****Application is available once you reach STEP 6 in the process (see flowchart above)**

QUESTION - IS THERE A BUS ROUTE?

Answer - Yes! All ages can ride the Gonzales bus.

The bus is \$800 for the entire year. The bus leaves Hermann Son's parking lot, in Gonzales, at approximately 7:10am and returns in the afternoon at 4:00pm.

There is a form you will complete during the enrollment process if you are interested.

QUESTION - WHO DO I CONTACT?

Mrs. Neely Yackel - Principal - nyackel@shinercatholicsschool.org

Mrs. Alisa Hybner - Assistant Principal & Counselor - counselor@shinercatholicsschool.org

Mrs. Ann Slatter - Director of Advancement & Admin. Assistant - aslatter@shinercatholicsschool.org

Mrs. Shannon Siegel - Business Manager - ssiegel@shinercatholicsschool.org